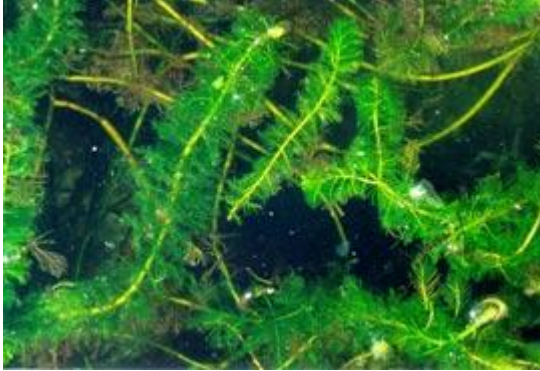


Genesee Valley Pond & Koi Club Newsletter

Volume 14 Issue 04

April 2010

A Sampling of New York State Invasive Species



Eurasian watermilfoil,
(Myriophyllum spicatum L)



Water chestnut (*Trapa natans L.*)



Round goby (*Neogobius melanostomus*)

“News From Norm”

Important: No club meeting on April 2, it has been moved to April 9. □

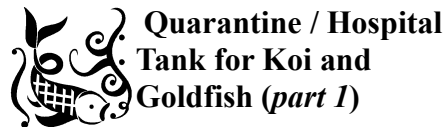
March Presentations

Larry Nau spoke about the "International Waterlily & Water Gardening Society (IWGS) 2009 Symposium held in St Charles, IL". He showed photos of ponds in St. Charles, IL, along with some new varieties of waterlilies and lotus. He also talked about several issues for pond keepers and water gardeners to be concerned about. Of special interest was the Texas White List (see p.3), a list of species that the state government deems non-invasive in Texas. Thank you, Larry for a stimulating presentation. □

Newsletter via email Option

Several people have expressed an interest in receiving the club Newsletter by email. Some people like to eliminate the extra paper in their household, some prefer to file their old newsletters on their PC and some would like to see all pages (with more color photos) in color on their PC monitor. The electronic version also allows the club to save money on copying and postage, which is a significant part of our club's annual expense. If you would like to receive your newsletter via email, please send your email address to: newsletter@gvpakc.org, or call Norm James at 334-3536. You can send more than one address if you use multiple email addresses. Rest assured that this is an

optional choice on your part. If you take no action, your newsletter will continue to be copied and mailed to you in hardcopy format. However if you wish to help the club reduce costs and receive your newsletter via email, just let us know. We appreciate your time in consideration of this option. □



So why do I need a quarantine or hospital tank? Basically there are two reasons:

- Isolate new fish so that their health and condition can be properly evaluated, and
- Isolate sick or diseased fish to prevent further spread of the problem and provide an easier way to treat the fish.

Why would I want to quarantine my new Koi or goldfish? Ask yourself if you mind losing all your fish. One basic rule of quarantine law must be established and never forgotten: **“Every new fish has every disease, parasite, and problem you can imagine.” There are no exceptions.**

If you believe for a second that the dealer or fish provider has done everything they can to identify and treat the fish prior to sale, you are heading for nothing but trouble. So, take the time to properly conduct quarantine procedures every time.

Setting Up a Quarantine Facility:

There are many tricks to setting

up a quarantine/hospital facility and how you do it will depend on your resources and needs. So, first let's start with what we need for a good quarantine tank:

The Tank: The general rule is to make this as large as possible. We suggest going with no less than 50 gallons for one or two very small koi or goldfish. Most people, however, tend to purchase koi and goldfish that need a little more room than that. Round or oval are the best shapes. Many pond owners prefer to use large heavy-duty Rubbermaid watering troughs available at any feed store. They come in 50, 100, 150 and 300-gallon sizes. Most people would do well with the 150-gallon size but others with larger koi should invest in the 300-gallon size. These tanks are tough, lightweight, resistant to almost all chemicals, and easy to come by. They can also be plumbed with bulkheads, ports, etc if needed.

The Filter and Pump: Filters for quarantine tanks are essential as the fish will be in the tank for extended periods of time. Here is the first of really good tricks: consider running a filter in your pond all season long for the sole purpose of using it as a quarantine filter when needed. Filters like the Rema API PondCare make a good choice as they are easy to clean, effective, and highly portable. The addition of some bio balls to this filter makes it more effective. Run the filter all season with a small pump so that it will be mature when it comes time to put the q-tank into operation. It does not matter that the filter has been

Genesee Valley Pond & Koi Club Newsletter

running in your main pond, just do not put it back into the main pond after the q-tank process is over until you have thoroughly cleaned it. Use a GFCI protected circuit only.

Other Hardware: You will also need the following:

- An airstone (unless your pump provides sufficient flow to make a big, aerating splash);
- A cover for the tank. Fish introduced into a new environment tend to want to jump out. Leaf screening makes a good choice.
- A hiding place. To help reduce stress, give the fish someplace to hide either using a floating cover (Styrofoam works well) or a plastic flower tub with holes cut in the side work well too.
- Grow light and timer. If the q-tank is set up indoors, a plant-type grow light with a timer works wonders. The "natural" day/night process will also help reduce stress. Use a GFCI protected circuit only.
- Heater and insulation. If the q-tank process is to be done in colder temperatures, chances are the q-tank water will need to be warmed. Household insulation wrapped around the tank and a large aquarium heater (300 watts for 100 gallons) work very well to hold the water temps at acceptable temperatures. Use a GFCI protected circuit only.
- Large plastic bags (strong/clear) and a separate bucket. Use these to help

handle fish.

- Large flat net.
- Thermometer.
- Journal to record the progress and procedures.

Medications: Every koi owner should have a stocked medicine cabinet for their fish, including the following medications to be used in the q-tank process. They are broken down into mandatory and optional medications. The optional medications are offered for consideration by the fish owner and represent a higher level of medication use. All medications should be used with extreme caution.

Mandatory:

- Salt – You can use iodized or non-iodized salt. Just make sure that you do not use salt with non-caking additives, such as YPS. Salt is used to manage stress, nitrite uptake, and parasite eradication.
- Amquel or Prime – Use Amquel or Prime to manage both the chlorine/chloramines of city water and ammonia levels.
- Fluke Tabs – Fluke tabs are the easiest and most practical way of eliminating flukes, especially in a q-tank environment.
- Dimlin (Anchors Away) – The commercial version of dimlin is called Anchors Away from Aquarium Pharmaceuticals and is used to eliminate anchor worms and lerneae.
- Iodine – For topical treatment of wounds.

- Baking soda – to manage KH levels.

Optional:

- Potassium Permanganate – Probably one of the most effective but dangerous medications used in the koi industry. A powerful oxidizer used to remove organics, kill parasites and flukes, and treat topical bacterial infections as a paste.
- Trichlorocide- this is a broad-spectrum fluke and lerneae/argulus killer and an organophosphate. It is easy to use and easy to come by and can replace BOTH dimlin and fluke tabs. Hint: know how to use organophosphates.
- Hydrogen Peroxide – to neutralize potassium permanganate treatments.
- Chloramine-T – An in-water medication used for the treatment of gill infections.
- Clove Oil – Used to temporarily knock out a fish for ease of treatment. Do not use in the q-tank directly but in a separate container.

Water: One of the most easily overlooked of the required q-tank elements is water. Keep in mind that two of the major goals of the q-tank process are to reduce the stress of the new fish and prepare him for the new pond. For a new fish, initially any source water can be used as long as it is properly treated (chlorine, pH, and KH). No matter what you use, the new fish will hate it and try to jump out. As you get closer to putting the fish into the main pond, you

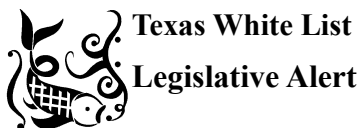
Genesee Valley Pond & Koi Club Newsletter

might want to consider using pond water during water changes so the fish can adjust to the pond's environment. However, no matter what source water you use, routine water changes, daily monitoring of ammonia and nitrite levels as well as weekly testing of KH levels will be needed. If you are managing a sick fish from your pond, you should only use pond water in an effort to reduce the stress levels of moving the sick fish to the Q-tank facility.

Buddy Fish: Keep in mind that koi and goldfish are schooling animals and as such, are happier when they have a buddy in the tank. If you have purchased just a single fish, then get a volunteer from the pond to keep the fish company. Goldfish, no matter what size, make good tank buddies for koi. Also, a healthy tank buddy also provides an indicator of behavior in the tank. If the new fish sulks and the tank buddy does not, it may indicate a problem with the new fish.

Placement of the Q-tank: Place the tank in a shady location outside, inside the garage or basement or in some sort of sheltered area.

(Next month: How to use your Q-tank) □



The Texas Legislature has directed the Texas Parks and

Wildlife Department (TPWD) to publish a list ("White List") of exotic aquatic plants, including algae, (ie., all non native aquatic species), which are approved for importation or possession in Texas without a permit. TPWD has been charged with compiling and finalizing this list by December 31, 2010. They must also develop rules for procedures for adding exotic aquatic plants to the approved list in the future.

TPWD has already developed a draft listing of exotic aquatic plants under consideration for approval for sale in Texas. This list is far shorter than lists provided by the Florida Division of Aquaculture; Nelson Water Gardens and Nursery, Inc., on behalf of Texas Businesses; and The International Waterlily and Water Gardening Society (IWGS). There is a great deal of concern regarding how the Genus *Nymphaea* (Waterlilies), will be handled in the new legislation. The waterlilies are without a doubt the most important water garden plant. Homeowners want beautiful waterlilies in their ponds and it is this desire for these plants that keeps manufacturers and suppliers of pond supplies in business.

The IWGS has stepped up in Texas to help monitor the legislation and give an industry response to TPWD.

We all need to keep up with legislation on ponds, water gardens, water plants, and fish, in order to give our feed back. As more states add legislation to try and deal with invasive plants and fish we need to understand how

we can help. Two ways we can help are: 1. make sure that we keep our pond plants and fish out waterways; and 2. spread the word about how important it is not to release goldfish, fish or plants into local waterways.

I will try to keep you updated by keeping links to new legislation on our website. You can also find out more by visiting the IWGS site at <http://www.iwgs.org/>.

□



If you would like to write an article for the newsletter or have an idea you would like to have researched, please send your article or your ideas to Norm James at gvpakc@rochester.rr.com

If your mailing address or email change or you would like to receive your newsletter via email, please send your change to: newsletter@gvpakc.org, or call Norm James at 334-3536.

Genesee Valley Pond & Koi Club
140 Winslow Ave,
Rochester NY 14620

Board Members 2009

President: Bob Wheeler
Vice President: Larry Hursh
Secretary: Jo Anne James
Treasurer: Denis Monefeldt
Pond Tour Chairperson: Norm James
Refreshments: Yvonne Wheeler
Newsletter Editors: N James, B Wheeler and L Hursh,
Webmaster: Norm James - gvpakc@rochester.rr.com

Purpose of the Club

- To promote, create and enlarge the hobby of keeping, breeding, appreciating and exhibiting koi and goldfish.
- To promote and appreciate the hobby of water gardening.
- To disseminate information about koi, goldfish and water gardening.
- To socialize and have fun.

We meet in a very friendly atmosphere at 7:00 pm, the first Friday of every month, at the Rochester Civic Garden Center (the Castle), 5 Castle Park, off Reservoir Ave., in Highland Park. Parking is free. Anyone interested in water gardening and/or Koi is welcome to join us. We ask that you consider joining the club after your third visit.

For more information call Bob Wheeler. (585) 461-5315 or e-mail BobWheeler58@gmail.com or visit the club website at <http://www.gvpakc.org>

Calendar of Events

April 2, 2010: No Meeting – Moved to April 9.

April 9 2010, Meeting: Friday 7PM, GVPAKC meeting at Warner Castle. Norm James will present “Photographing Ponds and Fish.”

May 7 2010, Meeting: Friday 7PM, GVPAKC meeting at Warner Castle.

June 5-6 2010, LilyFest 2010 at Bergen Water Gardens and Nursery, Churchville, NY.

June 6 2010, GVPAKC Plant Auction at Bergen Water Gardens and Nursery, Churchville, NY.

July is National Water Garden Month

“Naturally Green” - A live gardening show every Saturday from **9-10 am** on **WYSL 1040 AM**.